

MiniLine EI₂30, F30 Plus, EI₂60

Overview

The MiniLine fire resistant wooden loft ladder EI₂30/ F30 Plus/ EI₂60 offers an attractive design and is available in standard or made-to-measure sizes. It is supplied as a ready to fit unit, consisting of an aluminium concertina ladder contained within, and attached to, a wooden hatch box and an insulated trapdoor (U-value 0.92 W/m²K).

The MiniLine Loft Ladder is certified by MPA Braunschweig for either 30 minutes from below (EI₂30) or 60 minutes from below (EI₂60), for installation in either wood-beamed ceilings or concrete ceilings. For concrete ceilings only, the MiniLine is also certified to 30 minutes from below and above (F30 Plus).

The unit is supplied complete with a telescopic handrail, rubber feet, and white cover strips to fix onto the edges on the hatch box. The trapdoor has a turn latch locking mechanism which is operated by a wooden operating pole.

Up to 60-min Fire Protection | Aluminium Concertina Ladder | Light Duty | Airtight | Ease of Use | Highly Insulated



Product Materials & Finish

- Extruded aluminium ladder structure. Steel fixings throughout
- Hatch Box; ply board (18mm)
- Architrave; clip on PVC (50mm)
- Trapdoor; ply board insulated sandwich construction (60mm)
- Double bolt closure mechanism
- Protective feet
- Treads 330mm wide x 80mm deep
- Telescopic handrail included as standard
- Operating pole included as standard

Performance

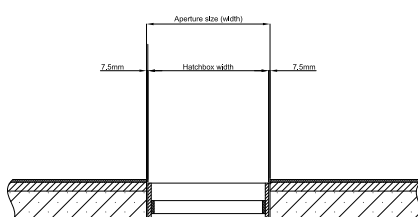
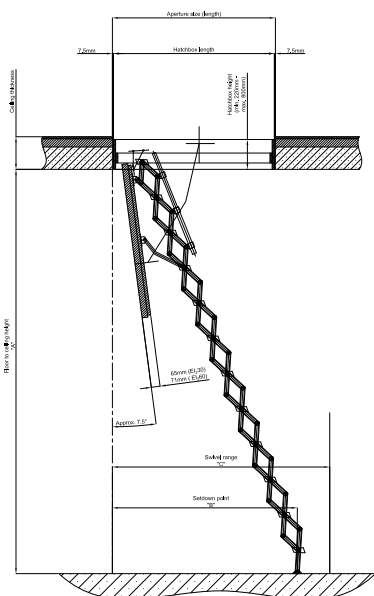
- High energy efficiency (U-value of 0.92 W/m²K, calculated by manufacturer according to DIN EN ISO 6946)
- Fire resistant hatch tested to either 30 minutes from below (EI₂30), 30 minutes from both sides (F30 Plus) or 60 minutes from below (EI₂60)
- Certified Class 4 airtightness
- Load capacity of 150 kg per step

Quality

- Manufactured and tested to EN 14975 (certified by TÜV SÜD)
- Tested according to EN 1363, EN 1634 and ÖNORM 3860 by IBS linz for 30 minutes and 60 minutes from below (EI₂30, EI₂60)
- Tested according to DIN 4102-2 by MPA Braunschweig for fire resistance of 30 minutes from below and above (F30 Plus)
- Class 4 airtightness tested in accordance to DIN EN 12207 by IFT Rosenheim
- Supplied with a manufacturer's 2-year full warranty and 10-year parts warranty

Optional Accessories

- Security lock
- Protective wooden or metal railing



Aperture length depends on the number of treads		Space required in cm		
N.B: F60 only available for ceiling heights up to 275cm and aperture widths up to 80cm				
Treads	Aperture size (length)	Floor to ceiling height "A"	Set down point "B"	Swivel range "C"
9	100-140	200 - 225	113 - 102	123
10	100 - 140	225 - 250	124 - 113	135
11	100 - 140	250 - 275	135 - 124	146
12	100 - 140	275 - 300	146 - 135	158
13	100 - 140	300 - 325	157 - 146	170

Hatchbox external dimensions = aperture size - 1.5 cm

Hatchbox external dimensions = aperture size - 1.5 cm

Standard sizes		
Aperture size length x width	Floor to ceiling height "A"	Hatchbox height
110 x 60 cm	225 - 275	22 cm
110 x 70 cm	225 - 275	22 cm
120 x 60 cm	225 - 275	22 cm
120 x 70 cm	225 - 275	22 cm

Drawings not to scale.

Environment and sustainability

Red listed components - none

Recyclability - Wooden components can be easily recycled