

Isotec Fire Rated Loft Ladder



Overview

High strength, three or four-part folding loft ladder with hatch door that has high thermal insulation and an airtight seal making the ladder suitable for use in energy-efficient buildings. 30 (EI₂30), 60 (EI₂60), 90 (EI₂90) or 120-minute (EI₂120) fire protection. Counter-balance spring mechanism provides easy operation.

High Strength | Highly Insulated | Up to 120-min Fire Protection | Ease of Use | Large Steps for Comfort & Safety



Product Materials & Finish

- Powder coated steel
- White Matte finish (RAL 9016)
- Lower hatch; 100mm thick stone wool insulation
- Upper hatch; automatically opening / closing upper hatch fitted where 60, 90 or 120-minute fire protection is required. Hinged on front-edge
- Wide / deep treads for comfortable and safe climb (360mm wide x 120mm deep)
- Integrated handrail
- Operating pole included as standard

Optional Accessories

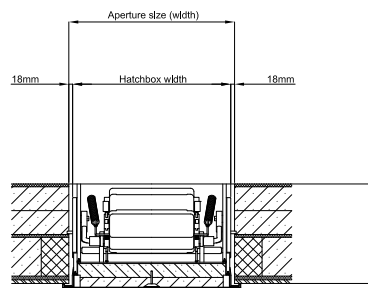
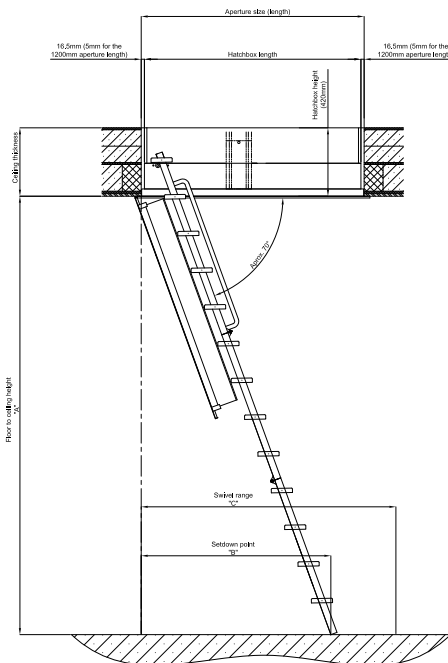
- Airtight sealing kit
- Upper-level guardrail
- Seamless lower cover (Isotec Luxe)

Performance

- High energy efficiency (U-value of 0.33 W/ m²K)
- Fire resistant loft ladder and hatch box – tested up to 120 minutes (EI₂120).
- High strength, heavy-duty loft ladder, with a load capacity of 250 kg per step.

Quality

- Manufactured and tested to EN 14975
- Tested (from below) to EN 1363-1, EN 1634-1 and ÖNORM B 3860 for fire resistance up to 120 minutes (EI₂120).
- Class 4 air permeability certified (according to EN12114 by IFT Rosenheim)
- Supplied with a manufacturer's 2-year full warranty and 4-year parts warranty



Custom sizes :

Custom sizes are available on request

Aperture length: 1000mm-1600mm (Isotec Luxe 1400mm max.)

Aperture width: 500mm - 900mm (Isotec Luxe 700mm max.)

Floor to ceiling height : Up to max. 3400mm

Fire protection certified for a maximum aperture of 1500mm long x 800mm wide

Space required in mm.				
Aperture size (length x width)	Floor to ceiling height "A"	Hatch box height	Set down point approx. * "B"	Swivel range "C"
1100 x 700	2550 - 2650	420	1090 (2600)	1390 - 1480
1200 x 600	2500 - 2650	420	1085 (2585)	1490 - 1640
1200 x 700	2500 - 2650	420	1085 (2585)	1490 - 1640
1300 x 700	2550 - 2750	420	1130 (2715)	1620 - 1780
1400 x 700	2550 - 2750	420	1130 (2715)	1620 - 1780
*Set down point varies, depending on floor to ceiling height. Floor to ceiling height shown in brackets.				

Drawings not to scale.