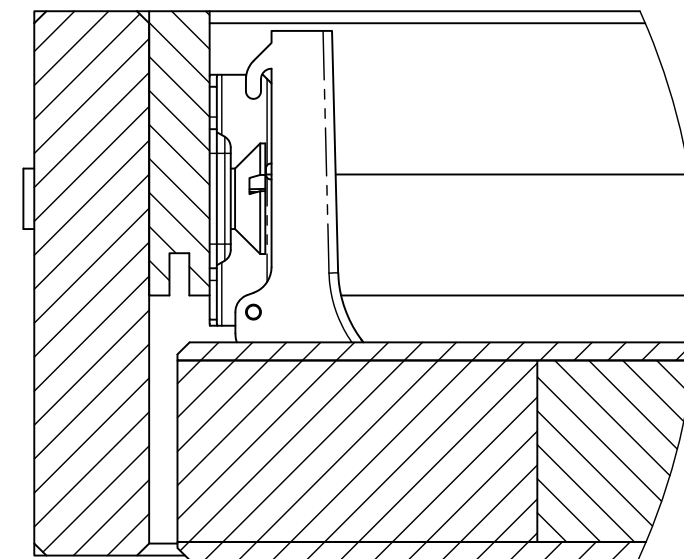
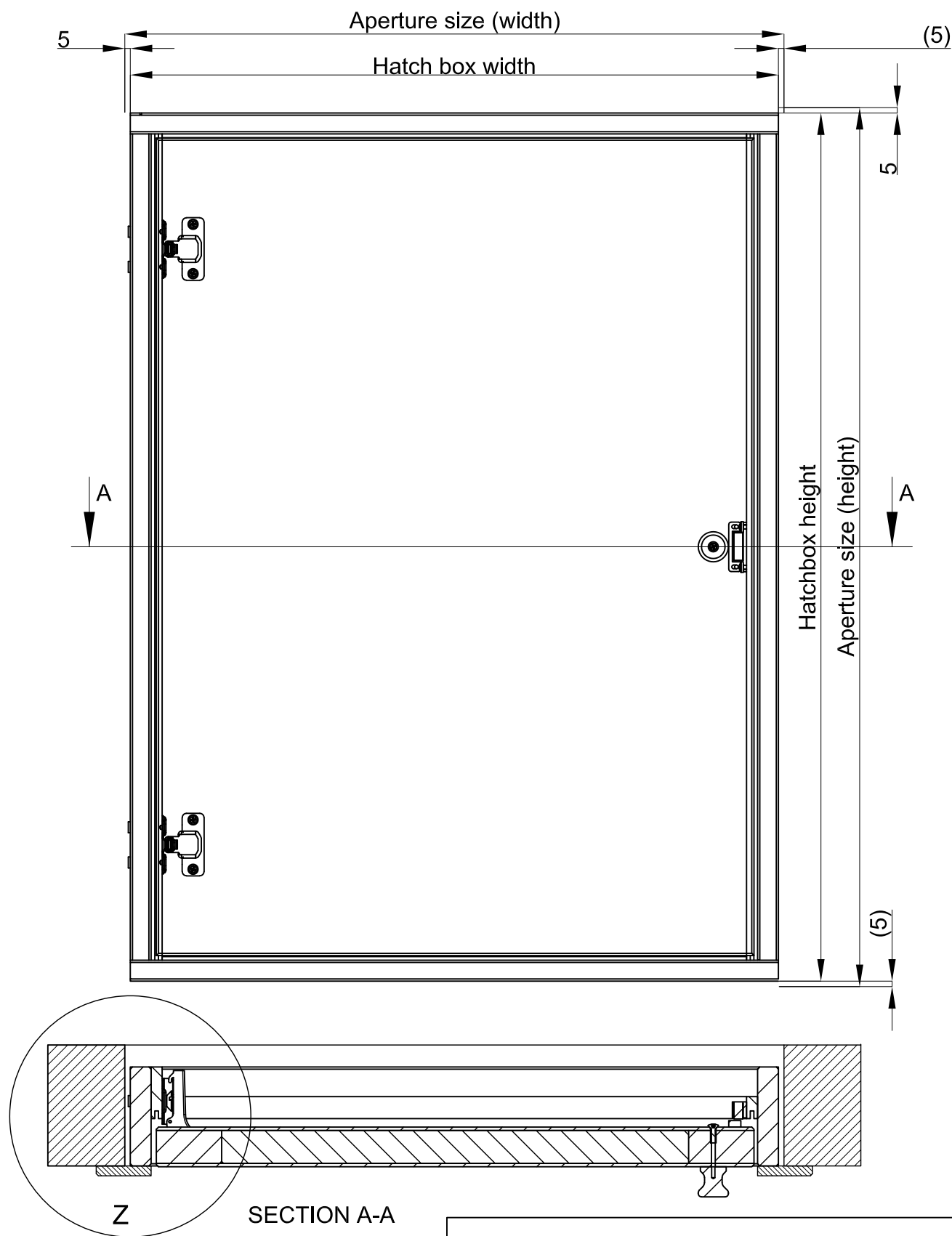


NOTE: ALL INFORMATION CONTAINED IN THIS DOCUMENT IS STRICTLY CONFIDENTIAL. THIS DRAWING IS THE PROPERTY OF PREMIER LOFT LADDERS AND MUST NOT BE REPRODUCED WITHOUT PRIOR PERMISSION.



DETAIL Z 4 : 5

ISO Loft Door

Ready to install element

Airtightness: Circumferential seal

Thermal properties: U-Value lower cover = 0.85 W/m²K
Calculated by the manufacturer according to DIN EN ISO 6946

Material and construction:
Door and frame constructed from timber
Front surface of door finished with white melamine coating
Magnetic catch (optional security lock available)

Standard sizes:
Aperture height: 700mm and 800mm
Aperture widths: 600mm and 700mm
Frame (hatch box) depth: 90mm



PREMIER LOFT LADDERS
2 Dawson Drive,
Trimley St Mary,
Felixstowe, Suffolk. IP11 0YW

Tel: 0345 9000 195
Fax: 01394 214413

www.premierloftladders.co.uk



© All rights reserved		Report all discrepancies		Do not scale drawings	
Other sizes and different ceiling heights are available on request		Date	Name	ISO Loft Door	Scale
	A	07/10/2022	JP		1:5
					AT A3
	8000101			The data on the drawings is for information only. All dimensions must be checked on site. No responsibility is taken for errors.	