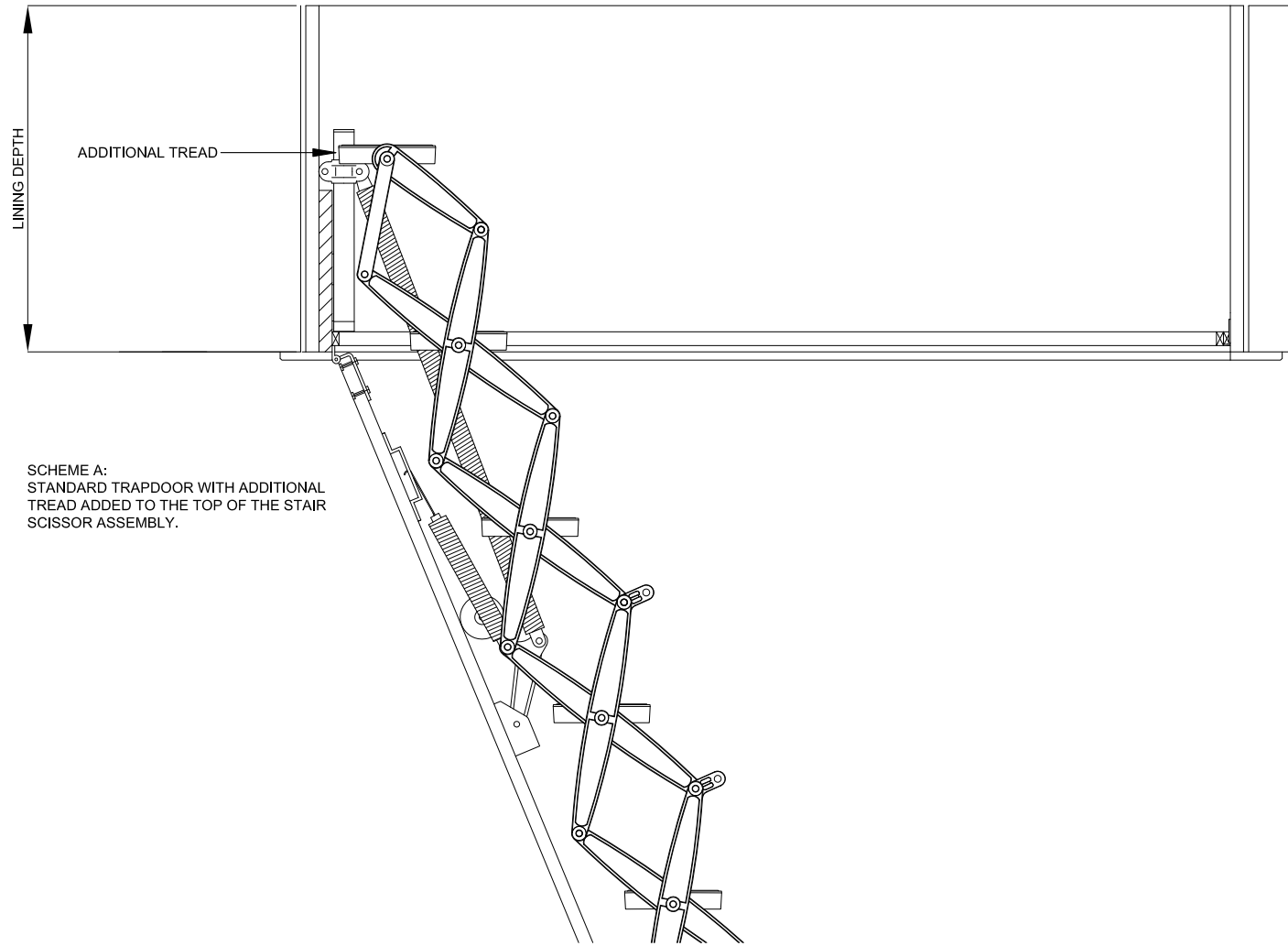
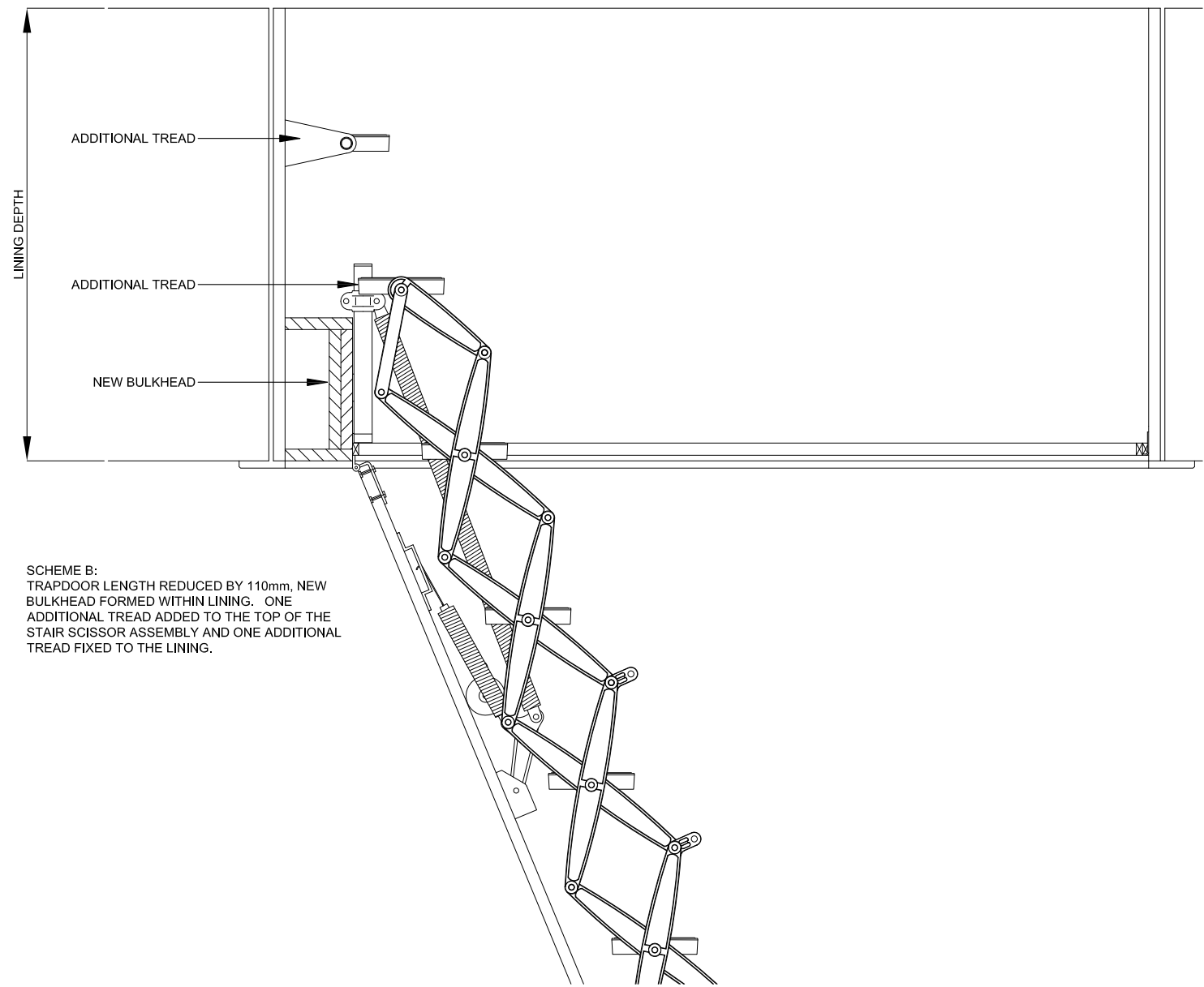


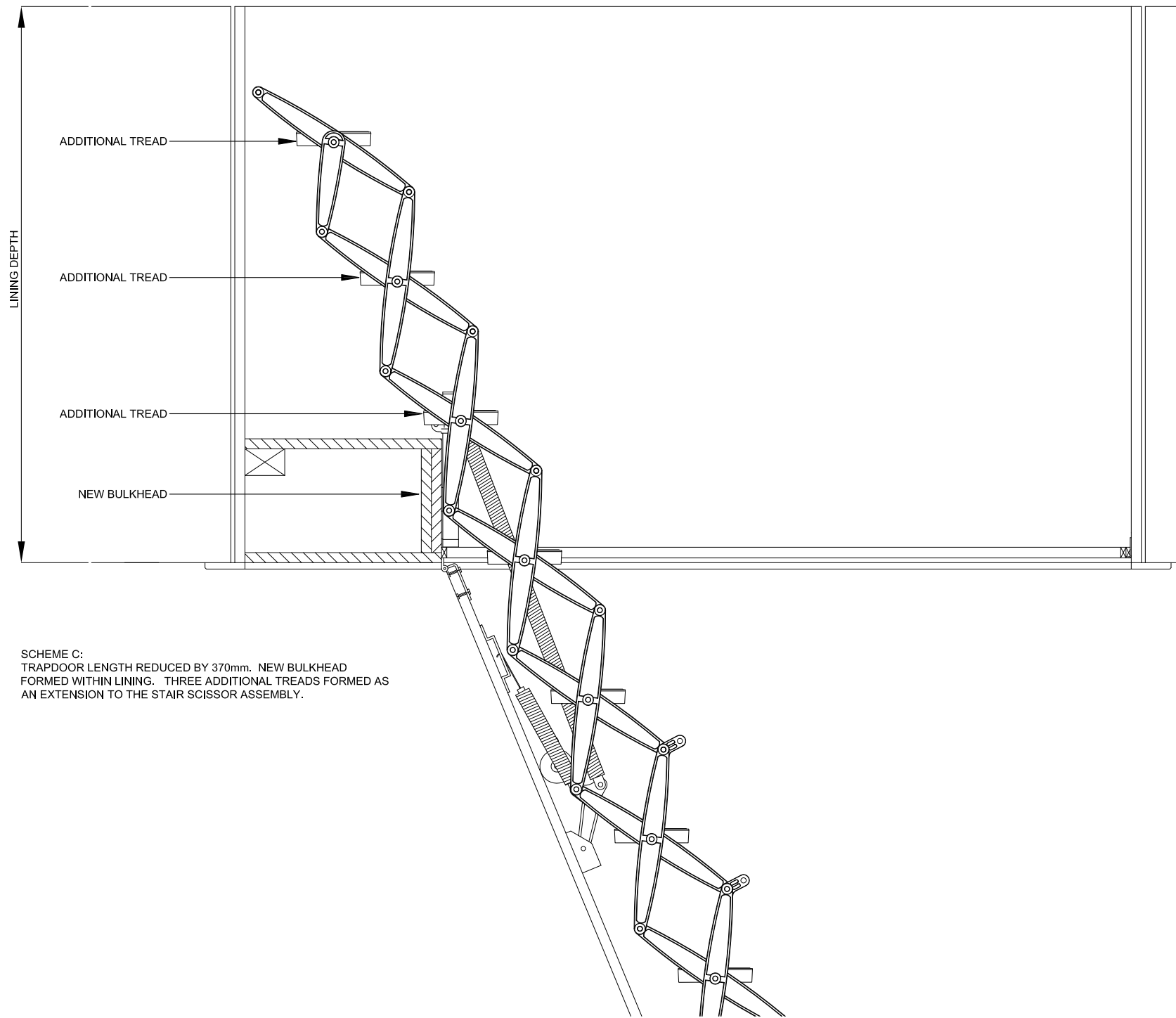
NOTE: ALL INFORMATION CONTAINED IN THIS DOCUMENT IS STRICTLY CONFIDENTIAL. THIS DRAWING IS THE PROPERTY OF PREMIER LOFT LADDERS AND MUST NOT BE REPRODUCED WITHOUT PRIOR PERMISSION.



SCHEME A:
STANDARD TRAPDOOR WITH ADDITIONAL
TREAD ADDED TO THE TOP OF THE STAIR
SCISSOR ASSEMBLY.



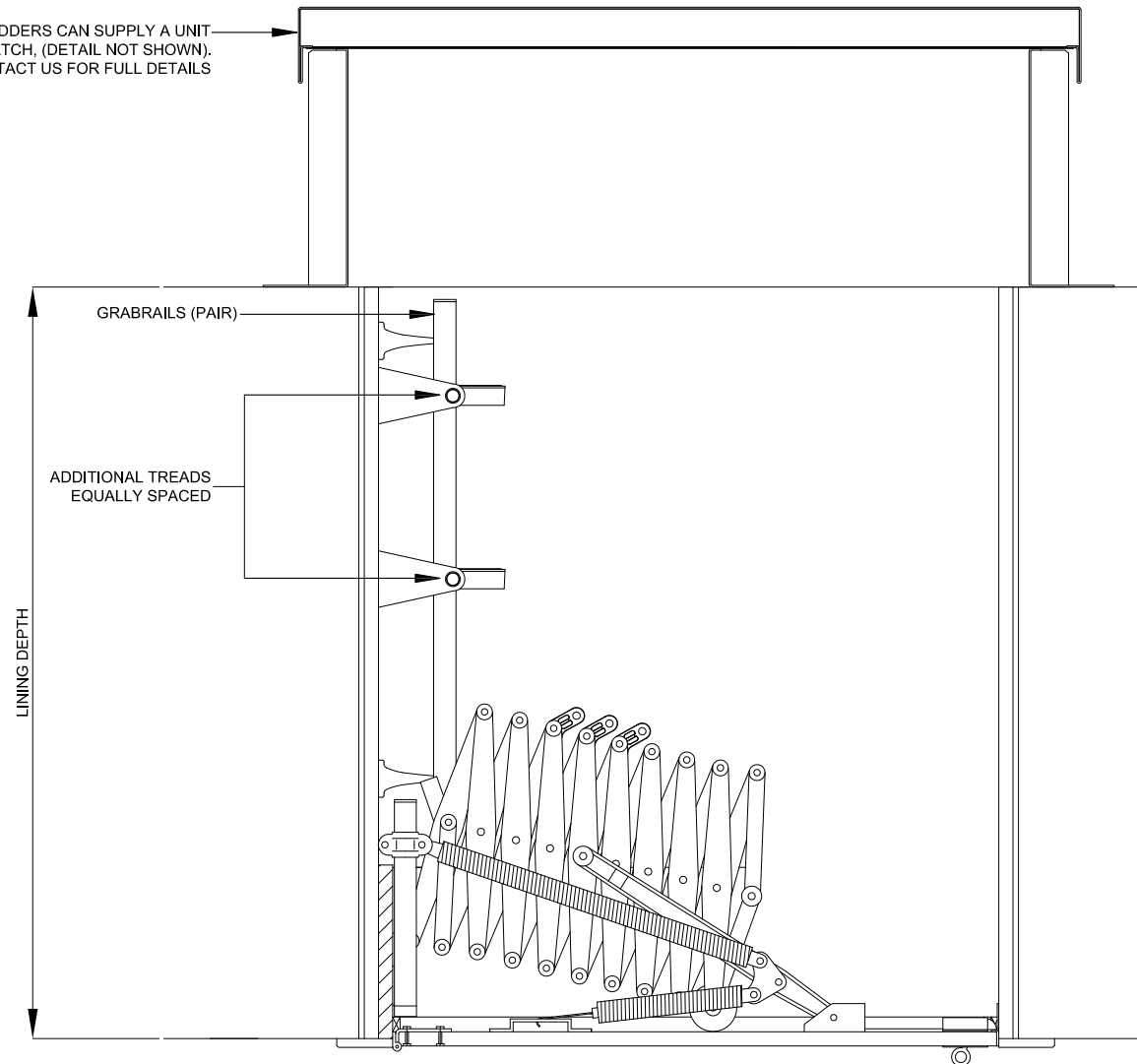
SCHEME B:
TRAPDOOR LENGTH REDUCED BY 110mm, NEW
BULKHEAD FORMED WITHIN LINING. ONE
ADDITIONAL TREAD ADDED TO THE TOP OF THE
STAIR SCISSOR ASSEMBLY AND ONE ADDITIONAL
TREAD FIXED TO THE LINING.



SCHEME C:
TRAPDOOR LENGTH REDUCED BY 370mm. NEW BULKHEAD
FORMED WITHIN LINING. THREE ADDITIONAL TREADS FORMED AS
AN EXTENSION TO THE STAIR SCISSOR ASSEMBLY.

POSSIBLE CONFIGURATION WITH ROOF HATCH

PREMIER LOFT LADDERS CAN SUPPLY A UNIT
COMPLETE WITH ROOF HATCH, (DETAIL NOT SHOWN).
PLEASE CONTACT US FOR FULL DETAILS



SCHEME D:
STANDARD TRAPDOOR WITH ADDITIONAL TREAD ADDED TO THE
TOP OF THE STAIR SCISSOR ASSEMBLY, IN ADDITION TO TWO
TREADS ADDED TO THE LINING. A PAIR OF HANDRAILS ALSO FIXED
TO THE LINING.



PREMIER LOFT LADDERS
2 Dawson Drive,
Trimley St Mary,
Felixstowe, Suffolk. IP11 0YW

Tel: 0345 9000 195
Fax: 01394 214413

www.premierloftladders.co.uk

© All rights reserved

Report all discrepancies

Do not scale drawings

Other sizes and
different ceiling
heights are
available on
request

FIRST ISSUE	Date	Name
A	03.2013	JP
	10.06.2020	JP

SupAddTread

Supreme:
Additional Tread Schemes

The data on the drawings is for information only.
All dimensions must be checked on site.
No responsibility is taken for errors.

Scale
1:10
at A2