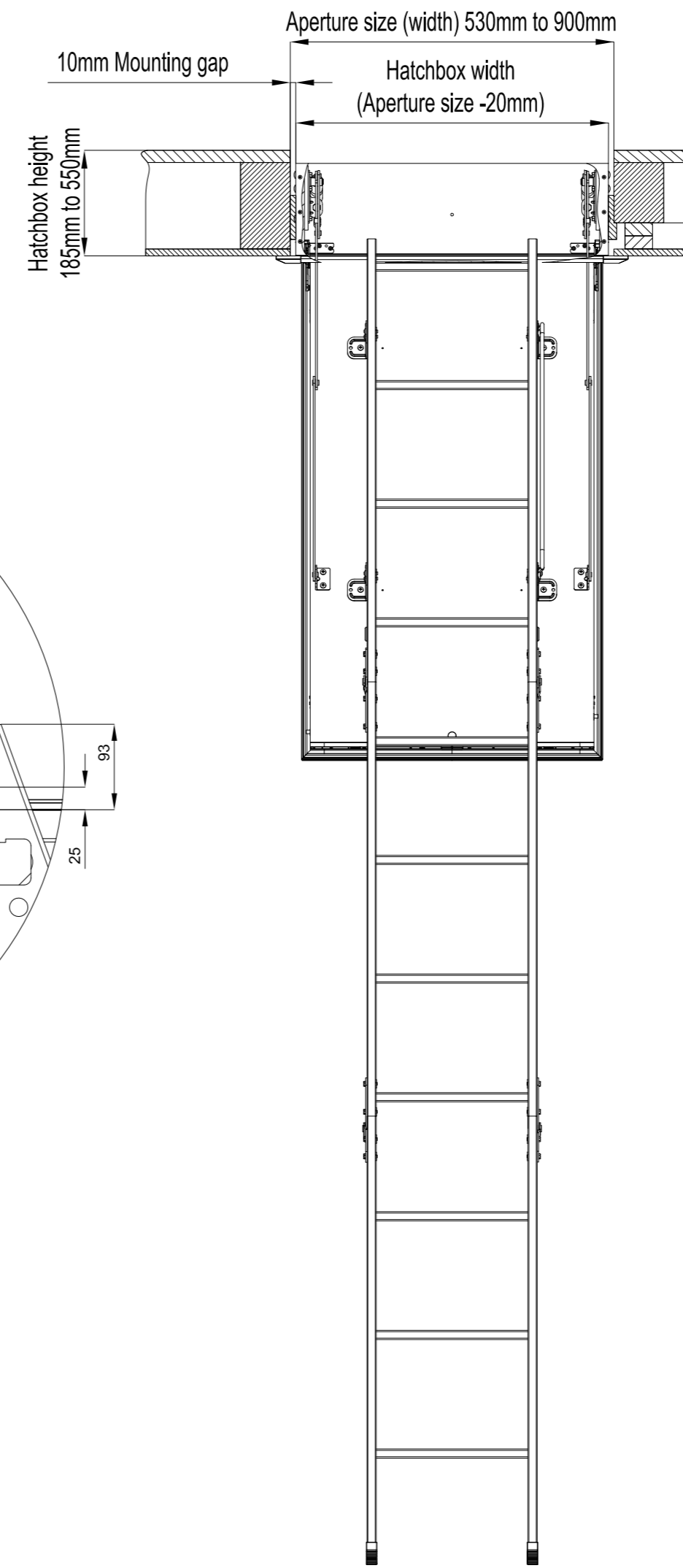
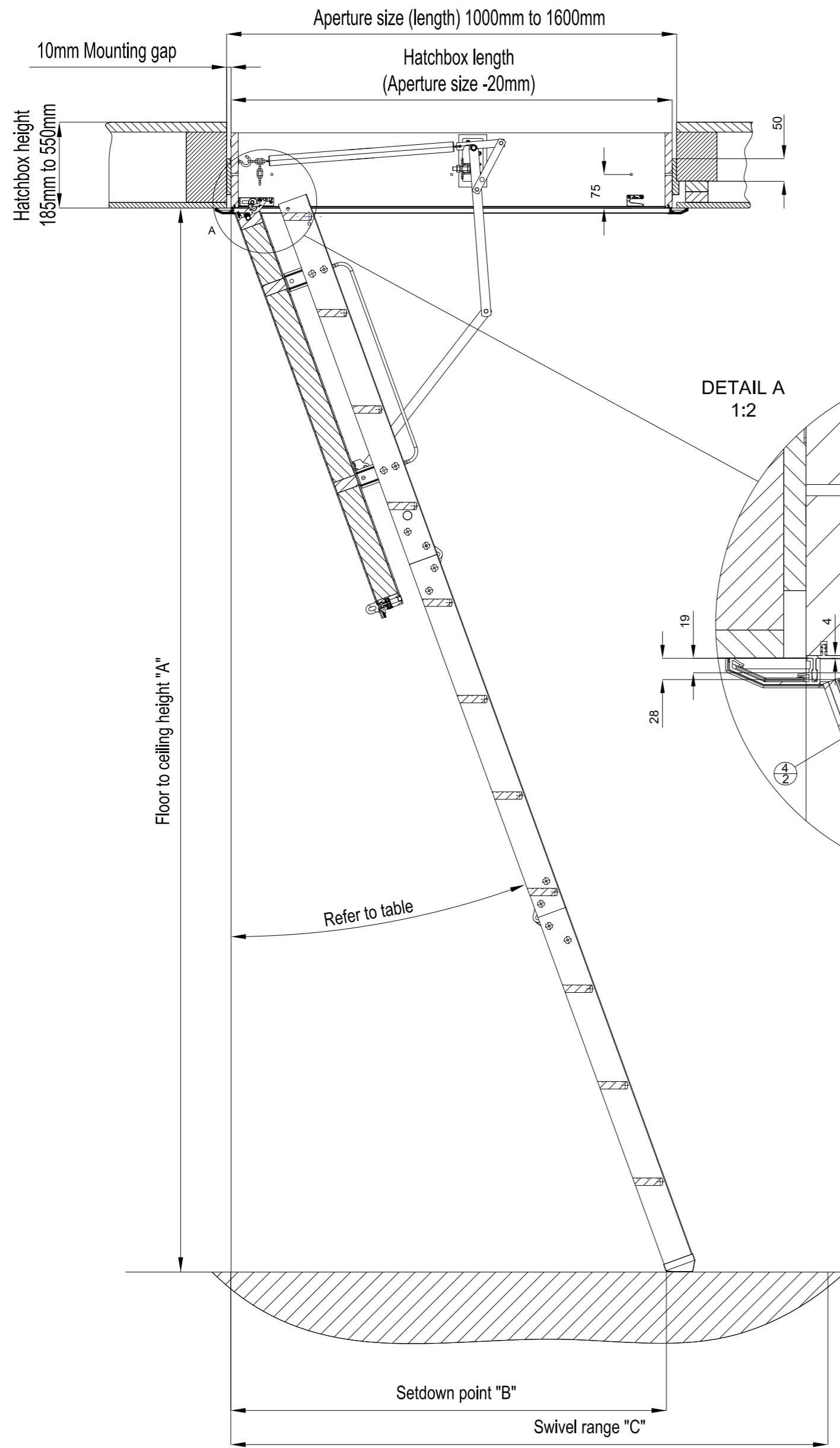


NOTE: ALL INFORMATION CONTAINED IN THIS DOCUMENT IS STRICTLY CONFIDENTIAL. THIS DRAWING IS THE PROPERTY OF PREMIER LOFT LADDERS AND MUST NOT BE REPRODUCED WITHOUT PRIOR PERMISSION.



Quadro 3: 3 part folding wooden ladder

Ready to install element
Safety tested: tested according to DIN EN 14975 by TÜV Süd

Airtightness: class 4 - tested to DIN EN 12207 / 12114 by IFT Rosenheim

Thermal Properties: U-Value lower cover 0.77 W/m²K
 Calculation of the isolated area according to DIN EN ISO 6946 by manufacturer

Stairs:
 Wooden ladder: 3-part folding
 Load bearing capacity per tread 150 kg or 350 kg/m² of the entire component
 Tread dimensions 33cm x 8cm

Custom sizes:
 Made-to-measure

Sizes (all dimensions in mm)				
Aperture length	Floor to ceiling height "A"	Setdown point "B"	Swivel range "C"	Extended stair angle
1000 - 1099	1955 - 2390	770 - 1140	1350 - 1440	15° - 22°
1100 - 1199	2400 - 2880	880 - 1260	1540 - 1630	15° - 21°
1200 - 1399	2400 - 2880	900 - 1495	1570 - 1730	15° - 25°
1400 - 1600	2530 - 3200	975 - 1875	1790 - 2035	15° - 28°



PREMIER LOFT LADDERS
 2 Dawson Drive,
 Trimley St Mary,
 Felixstowe, Suffolk. IP11 0YW

Tel: 0845 9000 195
 Fax: 01394 214413

www.premierloftladders.co.uk



©All rights reserved		Report all discrepancies		Do not scale drawings	
Other sizes and different ceiling heights are available on request	FRST issue	Date	Name	Quadro 3: 3 part folding wooden ladder	Scale 1:10
	A	28.04.2017	JP		
	B	04.12.2018	JP		
6000426		The data on the drawings is for information only. All dimensions must be checked on site. No responsibility is taken for errors.			