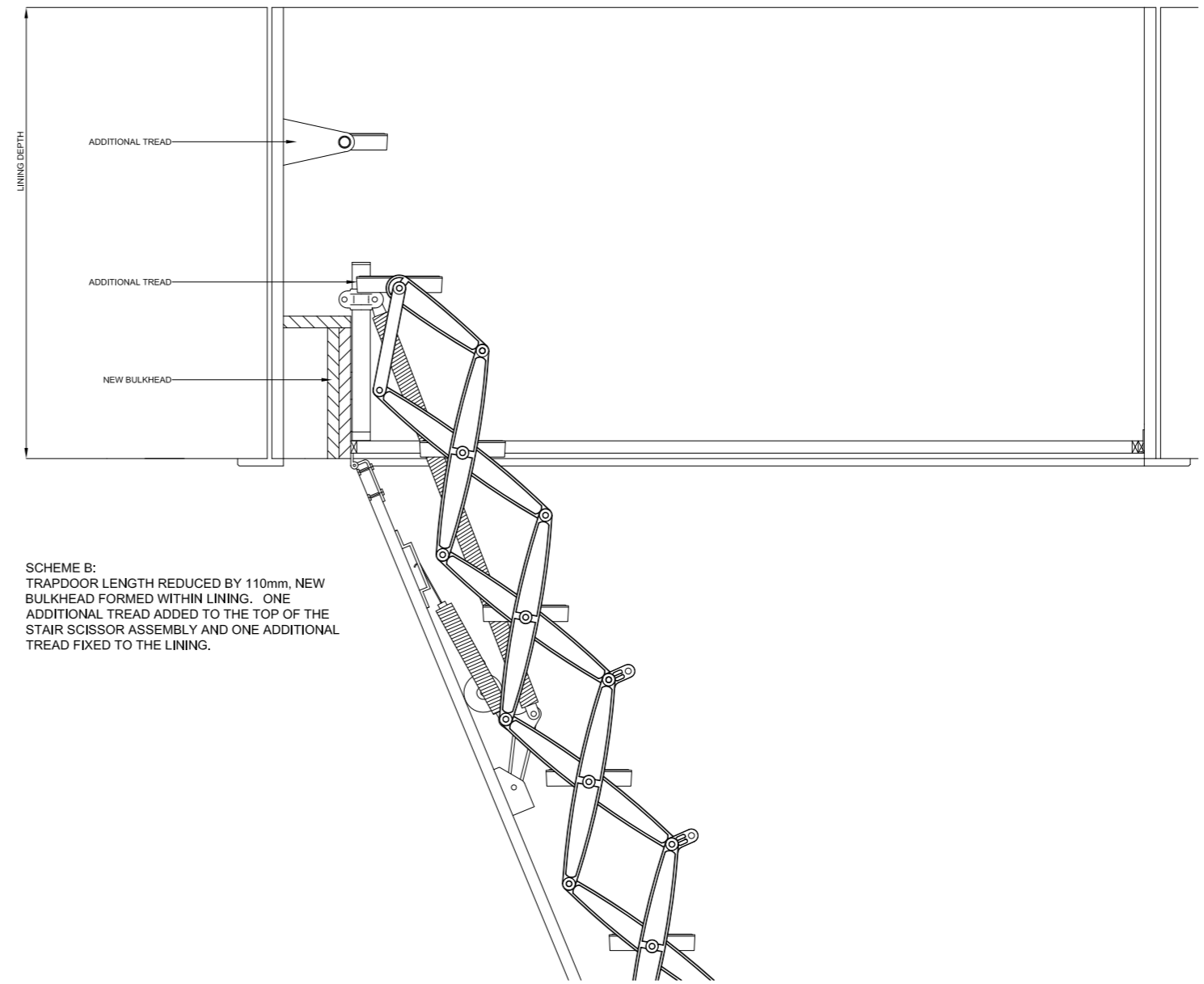
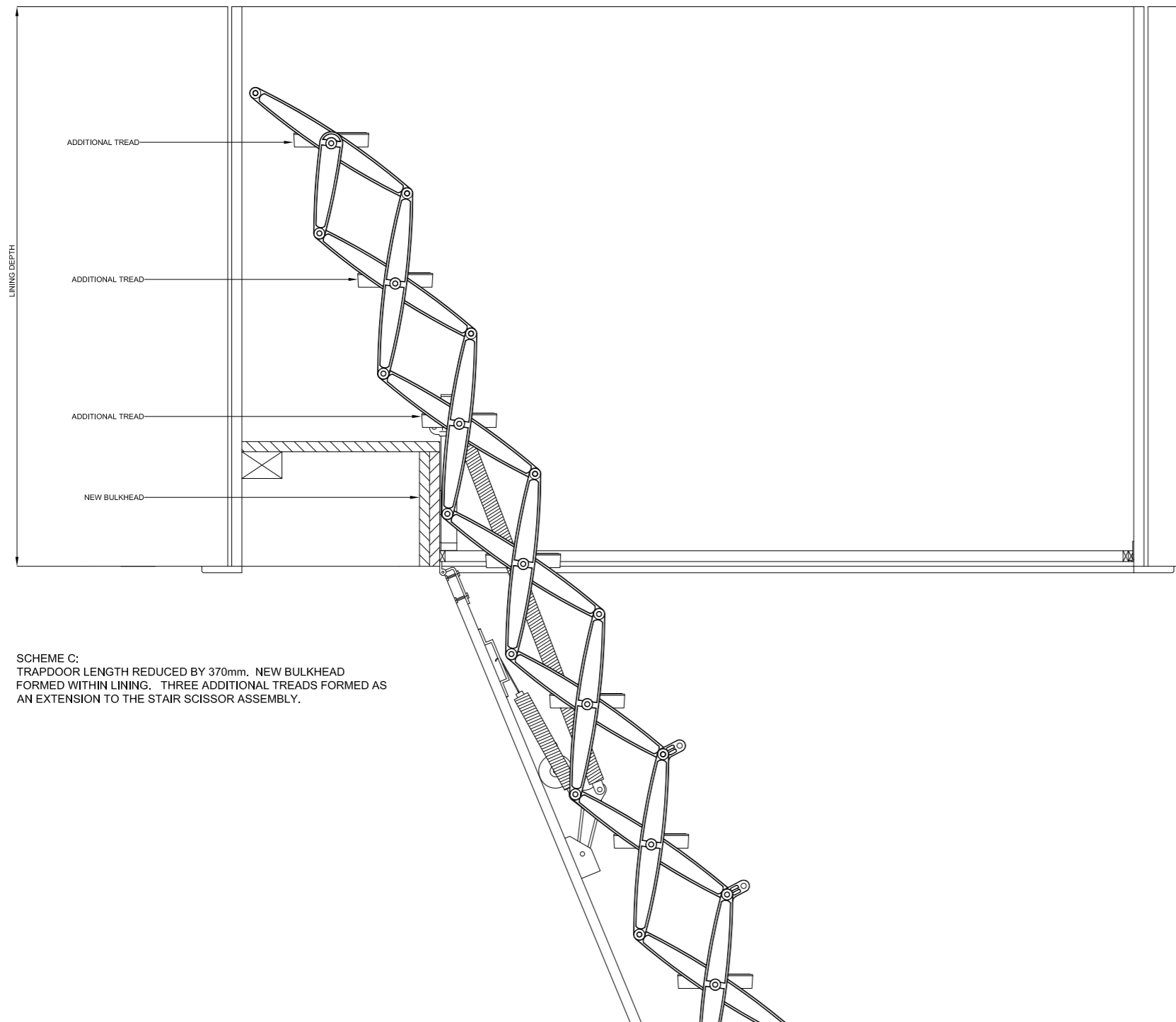


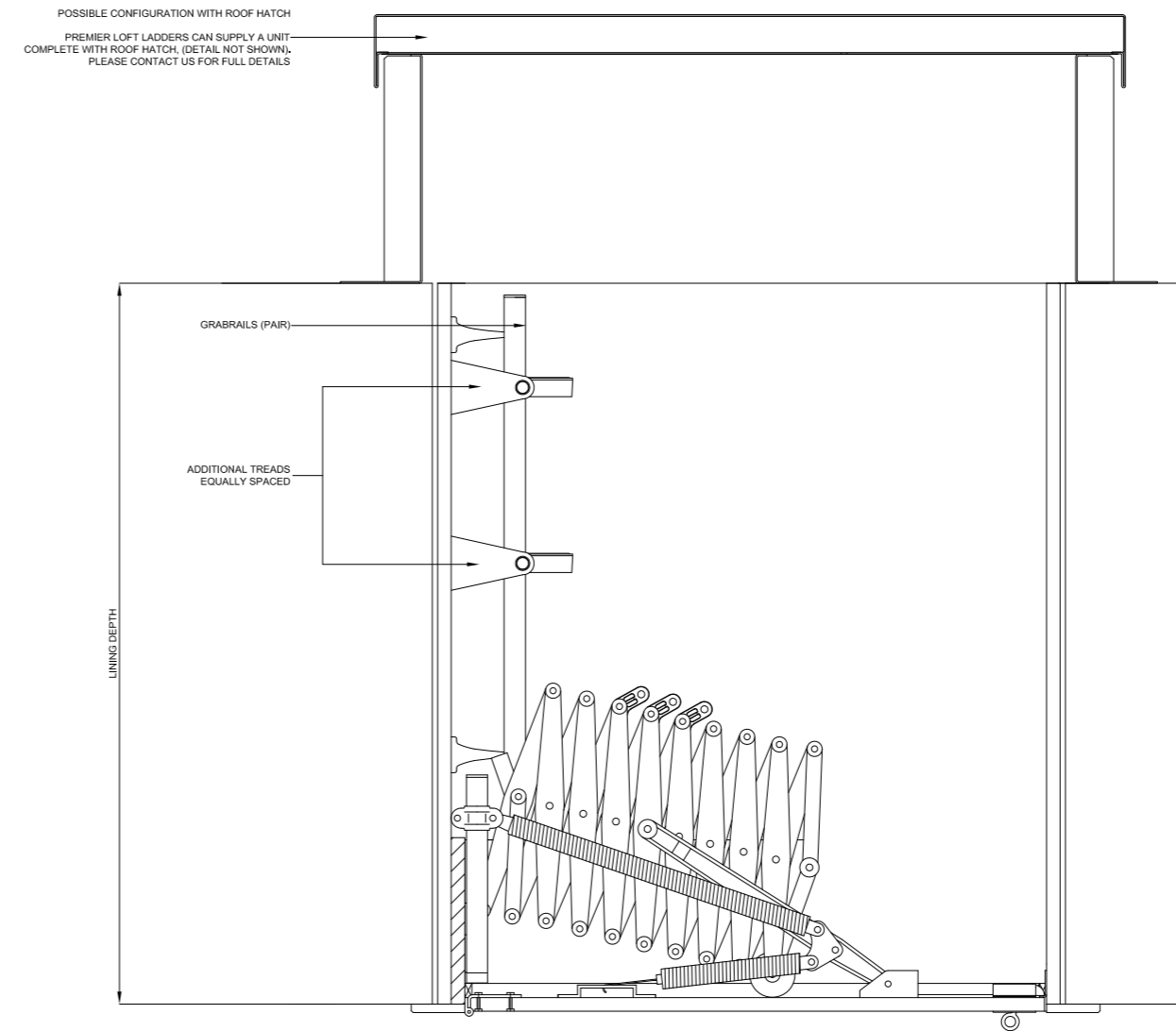
SCHEME A:
STANDARD TRAPDOOR WITH ADDITIONAL
TREAD ADDED TO THE TOP OF THE STAIR
SCISSOR ASSEMBLY.



SCHEME B:
TRAPDOOR LENGTH REDUCED BY 110mm. NEW
BULKHEAD FORMED WITHIN LINING. ONE
ADDITIONAL TREAD ADDED TO THE TOP OF THE
STAIR SCISSOR ASSEMBLY AND ONE ADDITIONAL
TREAD FIXED TO THE LINING.



SCHEME C:
TRAPDOOR LENGTH REDUCED BY 370mm. NEW BULKHEAD
FORMED WITHIN LINING. THREE ADDITIONAL TREADS FORMED AS
AN EXTENSION TO THE STAIR SCISSOR ASSEMBLY.



SCHEME D:
STANDARD TRAPDOOR WITH ADDITIONAL TREAD ADDED TO THE
TOP OF THE STAIR SCISSOR ASSEMBLY. IN ADDITION TO TWO
TREADS ADDED TO THE LINING. A PAIR OF HANDRAILS ALSO FIXED
TO THE LINING.