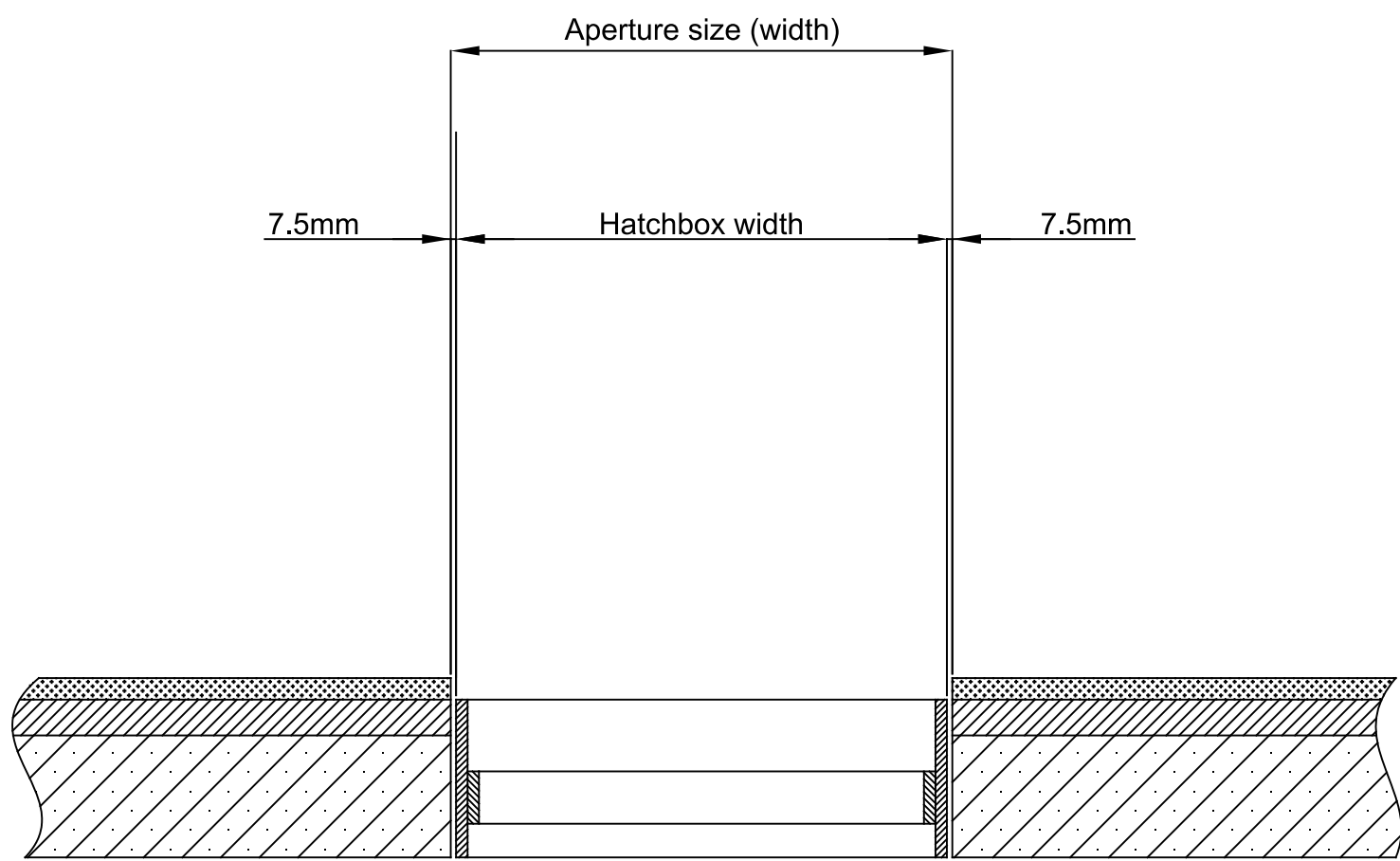
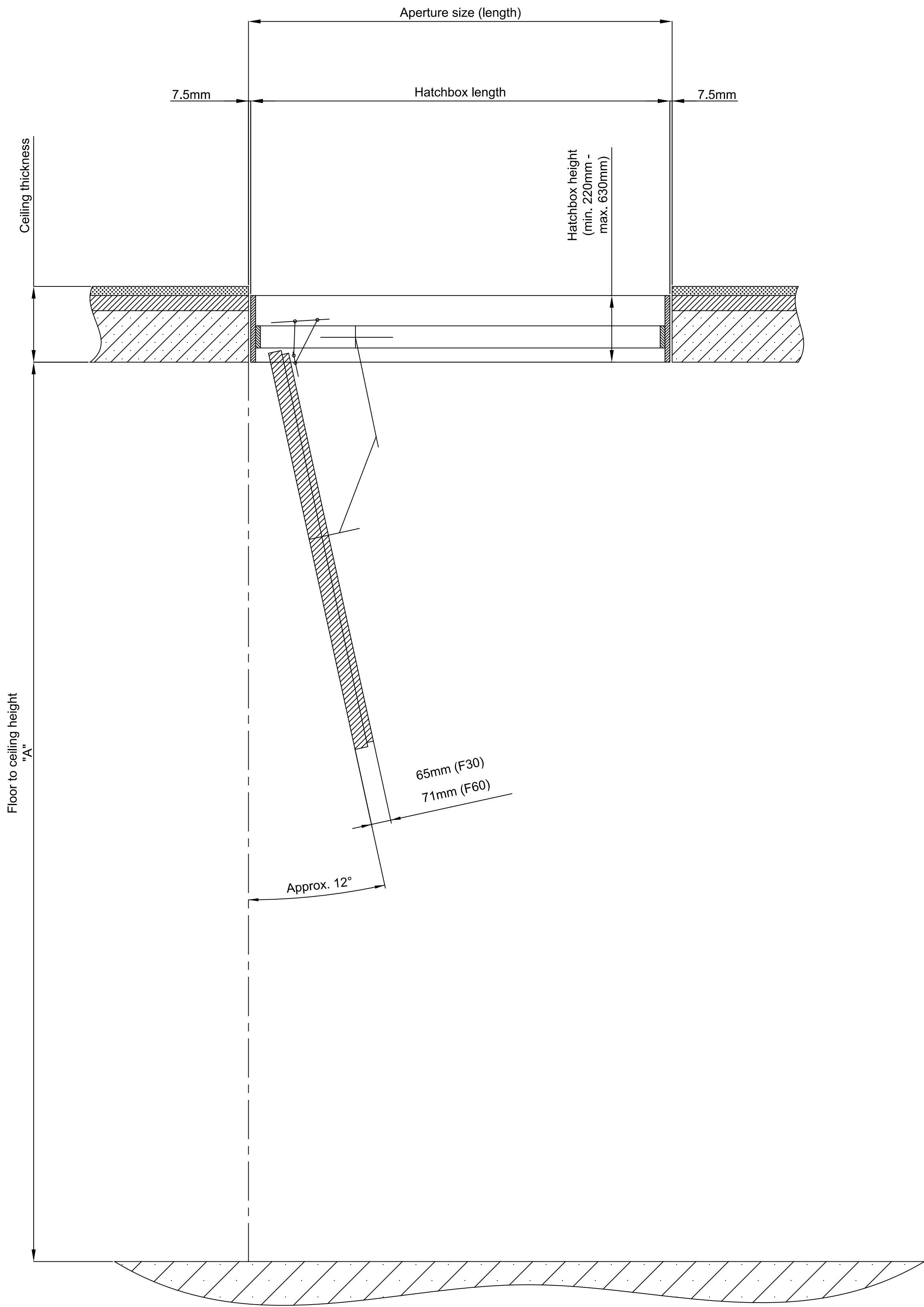


NOTE: ALL INFORMATION CONTAINED IN THIS DOCUMENT IS STRICTLY CONFIDENTIAL. THIS DRAWING IS THE PROPERTY OF PREMIER LOFT LADDERS AND MUST NOT BE REPRODUCED WITHOUT PRIOR PERMISSION.



Wooden Fire Rated Loft Hatch EI₂30, F30 Plus, EI₂60

Ready to install element

Airtightness (a value): class 4 - 600pa pressure tested to DIN EN 12207 / 12144 by ift Rosenheim

Thermal properties: U-Value lower cover = 0.92 W/m²K
Certified according to EN ISO 12567-1 by IFT Rosenheim

Fire Rating: EI₂30 = 30 minutes protection from below. EI₂60 = 60 minutes protection from below. Tested according to EN1363, EN1364 and 0NORM B3860 by IBS Linz. Installation in wood-beamed ceiling or in concrete ceilings. F30 Plus = 30 minutes protection from below and above. Certified to DIN4102-2 by MPA Braunschweig. Installation in concrete ceilings (≥150mm).

Custom Sizes:

Aperture length (F30, F30 Plus): 750mm - 1500mm

Aperture length (F60): 750mm - 1400mm

Aperture width (F30, F30 Plus): 550mm - 900mm

Aperture width (F60): 550mm - 700mm

Hatch box height: 220mm - 630mm



PREMIER LOFT LADDERS
2 Dawson Drive,
Trimley St Mary,
Felixstowe, Suffolk. IP11 0YW
Tel: 0845 9000 195
Fax: 01394 214413
www.premierloftladders.co.uk



© All rights reserved		Report all discrepancies		Do not scale drawings	
Other sizes and different ceiling heights are available on request		Date	Name	Wooden Fire Rated Loft Hatch F30, F30 Plus, F60	Scale 1:10 AT A1
		09.05.2018	JP		
	A	20.07.2024	JP		
	6000498		The data on the drawings is for information only. All dimensions must be checked on site. No responsibility is taken for errors.		