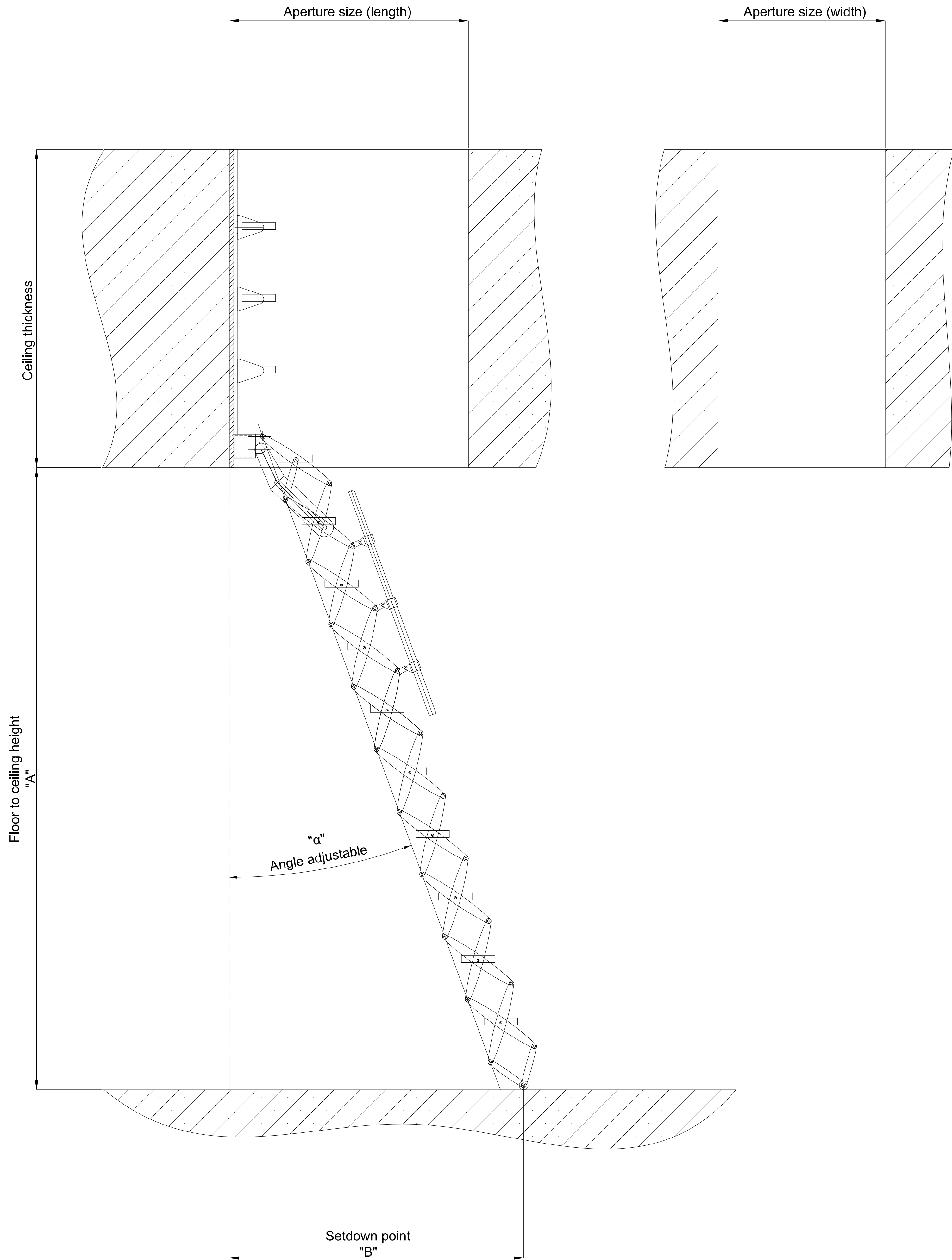


NOTE: ALL INFORMATION CONTAINED IN THIS DOCUMENT IS STRICTLY CONFIDENTIAL. THIS DRAWING IS THE PROPERTY OF PREMIER LOFT LADDERS AND MUST NOT BE REPRODUCED WITHOUT PRIOR PERMISSION.



Elite with high backboard

Ready to install element

Stairs:

Scissor unit: Aluminium

Load bearing capacity per tread: 200kg or 500kg/m² of the entire component.

Tread depth: 14cm (16cm)

Backboard:

Backboard treads are mounted on rails that can be repositioned by installer according to site conditions and relevant regulations.

Quantity of treads subject to backboard height.

Handrails fitted to backboard (min. height of 650mm)

Custom sizes:

Custom sizes are available on request. Please refer to custom width table below

Minimum backboard height 510mm

Aperture length depends on the number of treads		Space required in cm	
Treads	Aperture size (length) min. cm	Floor to ceiling height "A"	Setdown point with $\alpha = 20^\circ$ "B"
8	67	190 - 220	98 - 107
9	70	221 - 250	109 - 118
10	75	251 - 279	120 - 128
11	83	280 - 309	130 - 139
12	90	310 - 339	141 - 150

Custom widths	
Aperture size (width) min. cm	Tread width
59	25
64	30
69	35



PREMIER LOFT LADDERS
2 Dawson Drive,
Trimley St Mary,
Felixstowe, Suffolk. IP11 0YW
Tel: 0845 9000 195
Fax: 01394 214413
www.premierloftladders.co.uk

© All rights reserved		Report all discrepancies			Do not scale drawings	
Other sizes and different ceiling heights are available on request		Date	Name	Elite with high backboard	Scale	
	FIRST ISSUE	26.08.2016	Ra			
	A	08.08.2017	JP			
	B	04.05.2020	JP			
	6000419					
The data on the drawings is for information only. All dimensions must be checked on site. No responsibility is taken for errors.				1:10		